



# Full shielded patch panel

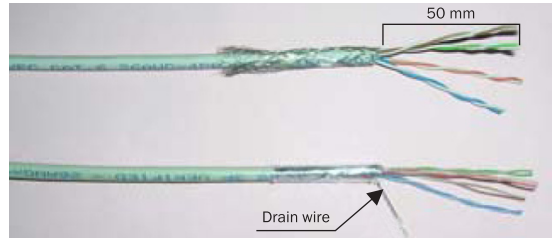
## Installation instruction DN-91624S-KL

1



Load down the screws and opening the metal cover.

2



Strip approximately 50mm from the cable jacket, fold back the foil or braid shield, and separate the wire into 4 pair each.

3

### T568A

Pin 1 White/Green  
Pin 2 Green  
Pin 3 White/Orange  
Pin 4 Blue  
Pin 5 White/Blue  
Pin 6 Orange  
Pin 7 White/Brown  
Pin 8 Brown

### T568B

Pin 1 White/Orange  
Pin 2 Orange  
Pin 3 White/Green  
Pin 4 Blue  
Pin 5 White/Blue  
Pin 6 Green  
Pin 7 White/Brown  
Pin 8 Brown

Follow the direction on the color-coding information to position T568A or T568B wiring, separate a little space on proper position and insert the wire pair by pair into each slot.

4



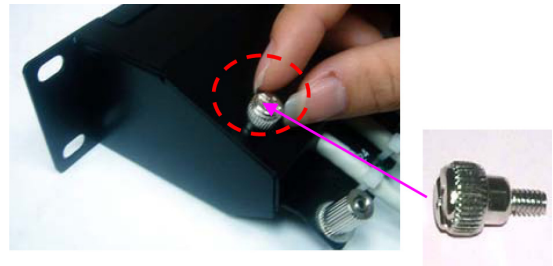
Press foil or braid shield to contact ground, and keep the cable straight; Push the wires with 110 or Krone impact tool and cut off the surplus wires.

5



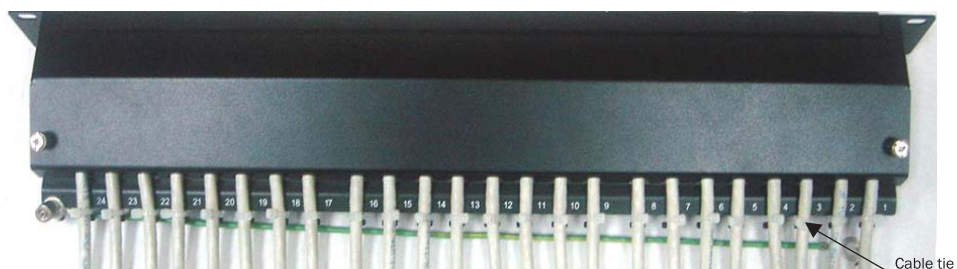
Fasten the screws through metal case to hold tightly down for two cable jackets in the same time.

6



Place the metal cover onto the bottom case and fasten screws.

7



Then complete the installation.